

MicW® | special
microphones



iShotgun™

The perfect microphone
for Camcorder, Cameras and mobile devices

Perfect for

ENG • Interview • Podcast • Video/Film Production

Introduction

Welcome to the MicW iSeries of professional microphones. MicW have been producing high quality microphones for measurement and recording applications since 1998.

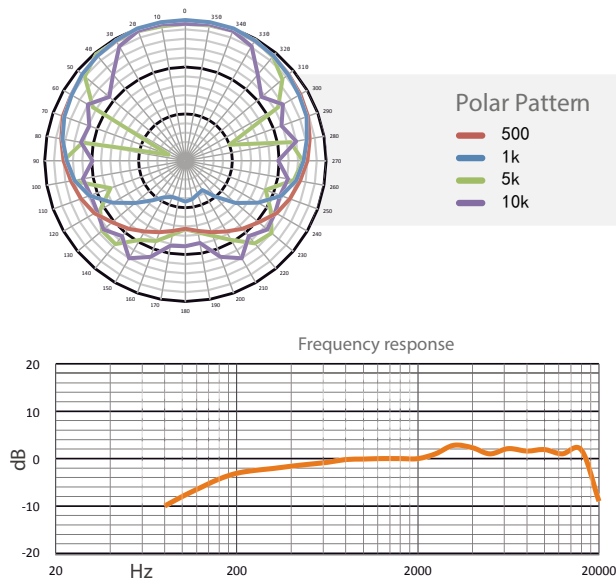
The iSeries has now applied this wealth of knowledge and technology to mobile devices such as smartphones, DSLR cameras and camcorders.

The iShotgun is a super-cardioid shotgun mic for professional use.

Features:

- Highly directional
- Compact and elegant design
- Rugged aluminum body and light weight
- No battery required
- Shockmount with flash shoe mounting
- Many accessories included

Diagrams



Applications

The iShotgun, as well as the whole iSeries, has been tested with the following devices:



iPhone • iPad • iPod touch • Samsung Galaxy • HTC Desire • Motorola XT Series • Canon 5D, 7D • Sony A1-pha 6 and 7 Series • Nikon D7000 • Panasonic X900M / X909 / V707 • Sony CX250 / CX570 / CX730 • Canon HFD10 • Computers with Microphone Input...

Power Supply* comes straight from the connector, there is no need for an extra battery.

Product Reliability*

The microphone is supplied with a pre-polarized capsule which is tested in a high temperature and high humidity environment for more than 24 hours.

* Every device must supply PlugIn-Power

* It is recommended that you use "Airplane Mode" for recording.

Specifications

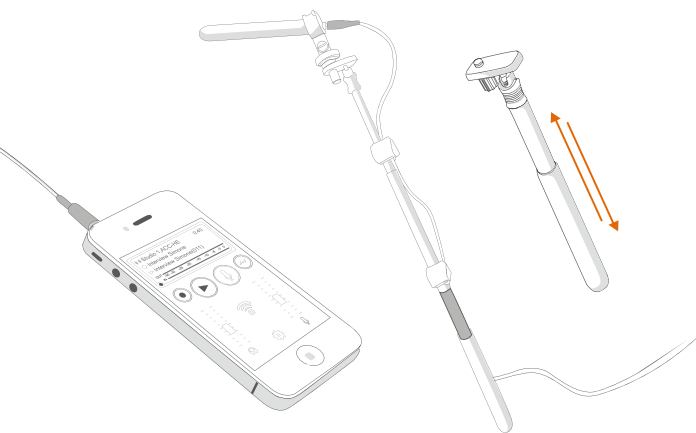
Type	Electret Condenser
Operation	Interference tube
Polar pattern	Super cardioid
Sensitivity (± 3 dB)	8 mV/Pa (-42 dB)
Frequency Response	100 Hz - 18 kHz
S/N ratio	> 65 dB
Impedance	< 2,2kOhm
Power supply	Plug and Play
Operating temperature	-20°C - +50°C
Diameter	8,0 mm
Size	length 13.6 cm
Weight	20 g
Connector	3,5 mm • 4-pole headphone jack



Mobile devices • Smartphones

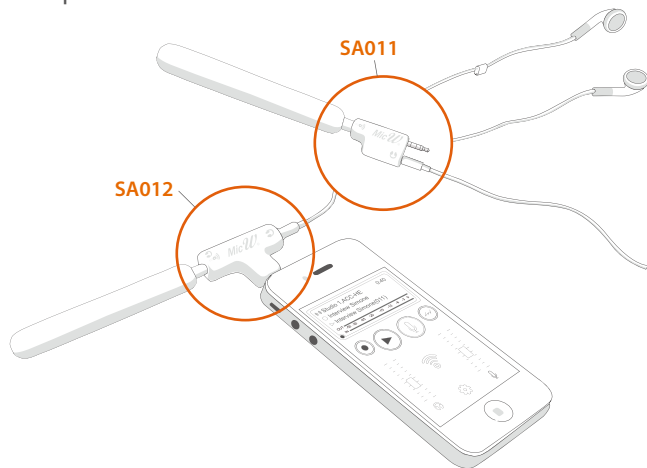
On many **mobile devices**, the MicW iShotgun will **automatically** be detected by simply connecting it to the headset jack.

For those situations where distance is critical, you can use the included boom-pole to get right in on the action.



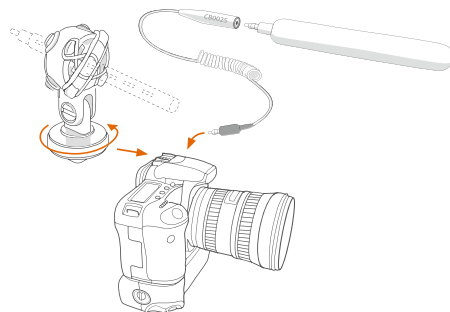
Split-Adaptor SA011 and SA012

The two **adaptors SA011** and **SA012** enable you to use the microphone and the headset simultaneously. Just plug the adaptor you need between the jack of the mobile device and the headphones/microphone.

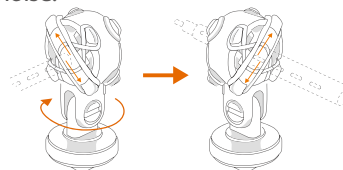


Camera & Camcorder

When using the iShotgun on Cameras and Camcorders, use the adaptor-cable **CB002S** and the shock-mount which fixes onto the flash-shoe mount. This provides a good isolation from handling noise.

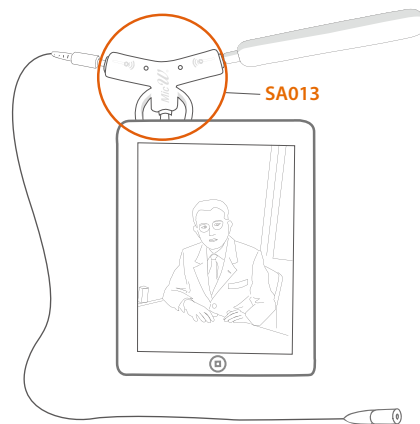


When using the shockmount, it is important to cross the rubber band on both sides (diagram below). This will secure the iShotgun in place and help minimise handling noise.



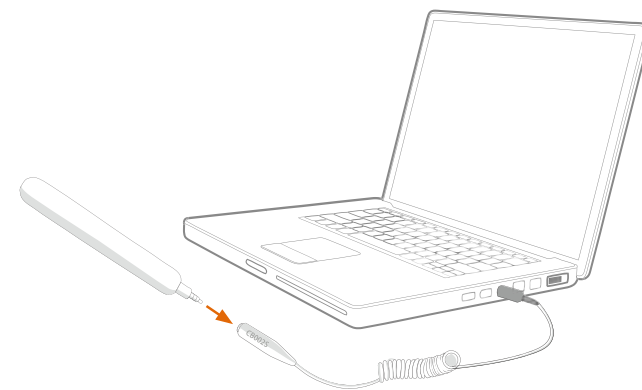
Split-Adaptor SA013

The Y Adapter SA013 enables you to use two microphones simultaneously from two direction for interview purpose. The SA013 also fits on the new iPhone5 and other smartphones for taking videos.



Computer and Mixer*

Using the iShotgun with a computer is very simple. Just use the adaptor-cable **CB002S** together with the extension cable **CBO30S** to get connected. Then activate the Mic-Input in your system settings.



* Make sure your computer has a microphone input with PlugIn-Power

What's in the box



CE | RoHS

MicW®

is a member of **BSWA Technology Ltd.**
Unit 1003, North Ring Center, No.18 Yumin Road, Xicheng District, Beijing 100029, China
Phone: +86-10-51285118 • Fax: +86-10-8225 1626 • sales@mic-w.com • www.mic-w.com

MicW | Product features and specifications are subject to change without notice